

# GALERIE KARSTEN GREVE



GALERIE KARSTEN GREVE

**Booth J06 | 6-8 December 2024**  
**Miami Beach Convention Center**

Galerie Karsten Greve is pleased to announce its participation in Art Basel Miami Beach 2024. For the 22nd edition of the fair, the gallery presents a selection of works by artists the gallery has long been collaborating with. With works by Cy Twombly, Louise Bourgeois, John Chamberlain, Lovis Corinth, Joel Shapiro and Louis Soutter, the gallery manifests its historical commitment for artists of the avantgarde. Kathleen Jacobs, Gideon Rubin, Georgia Russell, Qui Shihua and Ding Yi represent the contemporary program of the gallery, proving its topicality and continuation.

With *Untitled (Roma)* (1962), Galerie Karsten Greve presents a masterpiece by **Cy Twombly** from his decisive creative period in Rome in the early 1960s. The painting immediately precedes the series *The Death of Giuliano de Medici* and works such as *Catullus* and *Ides of March*, in which the artist explored violent themes from ancient history and mythology. Characterized by a violence of gesture and immediacy of color, these works are both a reworking of ancient myths and a reference to the contemporary events of the time marked by anxiety and terror. *Untitled (Rome)* forms part of a large body of work with the same title, and is both a preparation and a variation on these major themes. The provenance of the work directly from the artist emphasises its significance within this artistic period.

*The Mirror* by **Louise Bourgeois** is a large aluminium sculpture dating from 1998. The work stands out in its cool and sleek appearance to Bourgeois' soft sculptures and large-scale installations created around the same time. Presented alongside, the painted bronze *Portrait of Jean-Louis* (1947/1991) draws a line to the artist's early work. The work was first created in wood in 1947 before being cast in bronze in 1991. While the title refers to Bourgeois' *Personnages*, a body of geometrical sculptures with human features in wood, the form recalls the artist's home of choice, Manhattan. As Bourgeois stated: "This is not a house, this is a skyscraper." Both works were exhibited in major museum exhibitions, among them *Louise Bourgeois* shown at Tate Modern, London; Centre Pompidou, Paris; and The Solomon R. Guggenheim Museum, New York, among others (2007-2009).

With *Concetto Spaziale* (1952) and *Arlecchino* (1948), the exhibition presents two examples from **Lucio Fontana's** sculptural and pictorial oeuvre. While *Concetto Spaziale* forms part of the artist's search for an absolute abolition of volume in painting, *Arlecchino*, stems from his pursuit of a pure art in his ceramic sculptures. The little figurine shows the playfulness and improvisation, perhaps rawness of his ceramics in contrast to the often sober works on canvas. Through the little glass shatters on the painting, both works maintain a material and formal connection and establish a visual dialogue, proving to the artist's tenacity and unique artistic gesture.

**Pierre Soulages'** *Peinture, 213 x 181 cm, 4 juin 2008* (2008) is a masterpiece from the artist's *Outrenoir* body of work. Composed of three rectangular canvasses vertically placed on top of each other, the painting juxtaposes a glossy layer of thick black paint with an entirely matte ground. Large and strong cuts into the thick paint unite both the layers and individual parts of the painting. The work impresses by its size and materiality, illustrating the artist's persistent gesture and artistic endeavour.

ST. MORITZ

PARIS

KÖLN

# GALERIE KARSTEN GREVE

The presentation of *Peinture, 213 x 181 cm, 4 juin 2008* coincides with the joint exhibition *Pierre Soulages / John Chamberlain* at Galerie Karsten Greve's Paris gallery space until December 21, 2024. *Opera Chocolates* (1994) by **John Chamberlain** illustrates in an exemplary way the artist's connection to poetry. Composed of the letters o, c, r, the sculpture embodies its title or vice versa. The pink, turquoise, cream and red metallic lacquers allude to chocolate wrappings. The stark aluminium stands in sharp contrast to the soft forms, creating a sculpture that is at the same time literal as it is poetic.

The four finger paintings by the Swiss artist **Louis Soutter** date from the artist's last, and most expressive creative period. Created between 1937–1940, the works allude to cave painting expressing existential gestures and prehistoric forms. The titles range from exalting to macabre, illustrating the width of mental states in the last years of the artist's life. In 2024, Galerie Karsten Greve published an extensive publication, uniting previous catalogues from 1998 and 2020, and paying tribute to the complex work of this outstanding artist.

*Untitled* (c. 1946) by **Wols** stands pars pro toto for the gallery's dedication to promoting the work by the German artist. Following his exhibitions at Karsten Greve Paris and Cologne (2023-2024), and the comprehensive publication (2023), a solo exhibition of institutional quality presenting previously unexhibited work by the artist will open at Galerie Karsten Greve AG in St. Moritz, on December 29, 2024.

The works by American artist **Kathleen Jacobs** presented at Art Basel Miami Beach reveal the range of moods in the artist's oeuvre. Working exclusively in frottage on wood, the paintings in natural tones show the variation and wealth within a single technique achieved through color. While *HUBRD* (2020) and *REVEL* (2023) are bold and provocative, *RYVVR* (2024) is calm and uplifting. Grounded in Taoism and Zen philosophy, the paintings share a simultaneously grounding and exalting effect.

The new paintings by **Gideon Rubin** presented on the occasion of Art Basel Miami Beach demonstrate the artist's versatility towards the motif. Classical motifs from art and movie history are juxtaposed with the painter's iconic women portraits, distinct landscapes and modern still lifes. The character of the paintings ranges from bold and playful to withdrawn and intimate. The painter plays with gestures and styles, anonymizing the subject while opening a space of interpretation.

Ahead of her solo exhibition at Galerie Karsten Greve Paris in January 2025, **Georgia Russell** presents new works at Art Basel Miami Beach. The works on canvas, paper and organza show the artist's ongoing pursuit of transparency and movement through the gesture of cutting. By superimposing different layers of cut material, Russell creates an immanent dynamic that engages the whole body starting from the eye. Organza in particular takes on an enigmatic quality reminiscent of mist and smoke. Color, gesture and material create a mesmerizing visual experience that captures the space between the viewer and the work.

## Galerie Karsten Greve

Featuring internationally renowned artists of the 20th and 21st centuries, the presentation at Art Basel Miami Beach 2024 illustrates Galerie Karsten Greve's compelling programme and emphasises its diversity of media through unique artistic voices.

Born in 1946, Karsten Greve studied in Cologne, Lausanne and Geneva. He began his career as an art dealer and publisher in 1969. In early 1973, he opened his first gallery in Cologne, with an exhibition devoted to Yves Klein. Karsten Greve subsequently opened galleries in Paris, in the Marais, in 1989, and in Saint-Moritz, Switzerland, in 1999.

# GALERIE KARSTEN GREVE

## PRESENTED ARTISTS

**Louise Bourgeois**

**John Chamberlain**

**Louis Corinth**

**Lucio Fontana**

**Kathleen Jacobs**

**Gideon Rubin**

**Georgia Russell**

**Joel Shapiro**

**Qui Shihua**

**Pierre Soulages**

**Louis Soutter**

**Cy Twombly**

**Wols**

**Ding Yi**

# GALERIE KARSTEN GREVE

## CURRENT EXHIBITIONS

### **Paris**

*Pierre Soulages / John Chamberlain*

19.09.2024 – 21.12.2024

### **Cologne**

Ding Yi

*Constellations*

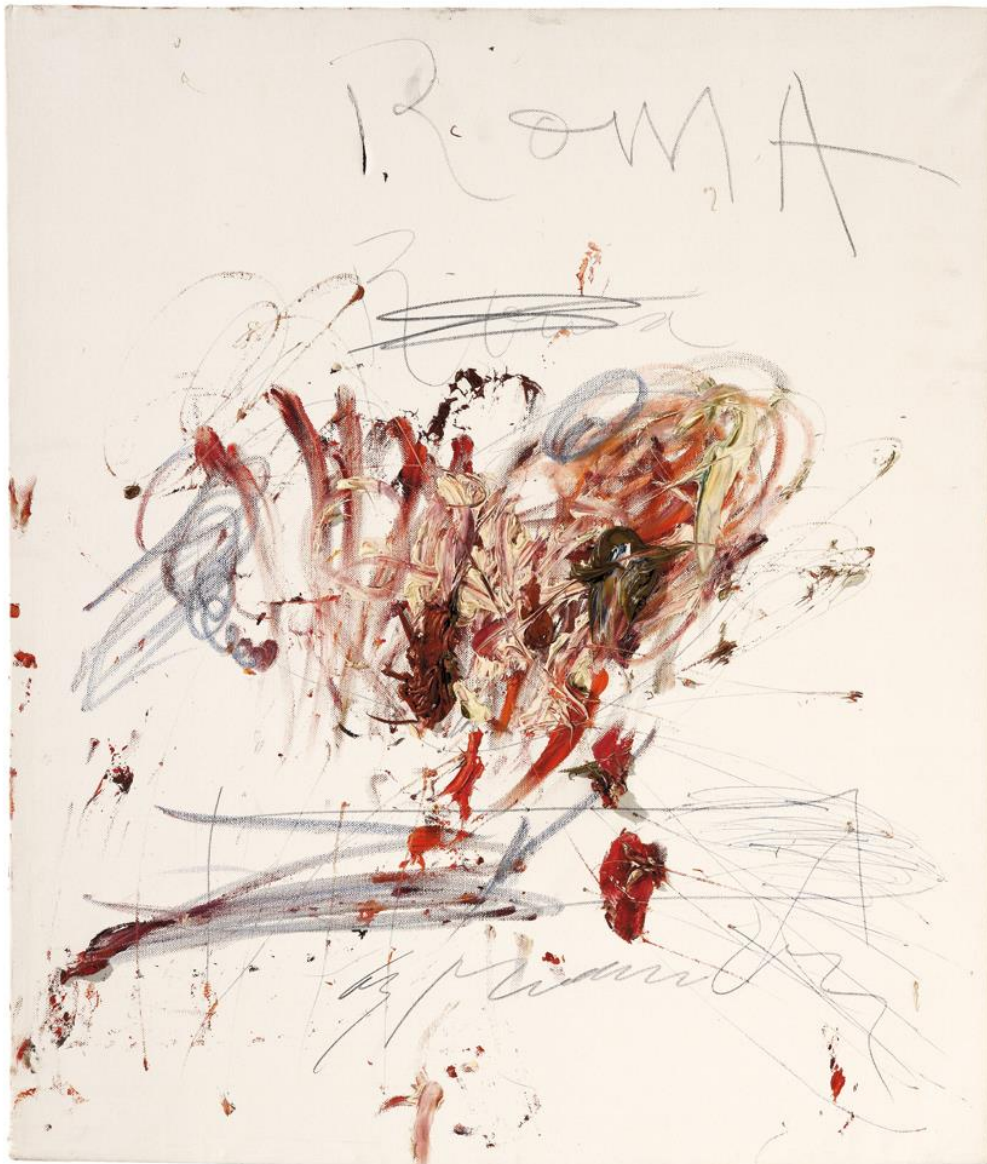
08.11.2023 – 18.01.2025

### **St. Moritz**

*WOLS*

29.12.2024 – 22.03.2025

# GALERIE KARSTEN GREVE



**Cy Twombly**  
*Untitled (Roma)*  
1962

Oil, pencil and wax crayon on canvas  
70.2 x 60 cm / 27 2/3 x 23 2/3 in  
105.2 x 95 x 9 cm / 41 1/2 x 37 1/2 x 3 1/2 in

# GALERIE KARSTEN GREVE



**Gideon Rubin**

*Untitled*

2019

Oil on linen

100 x 85 cm / 39 1/3 x 33 1/2 in

ST. MORITZ

PARIS

KÖLN

# GALERIE KARSTEN GREVE



**Georgia Russell**

*Forever Ever*

2024

Acrylic and gouache on organza

220 x 190 x 11 cm / 86 2/3 x 74 3/4 x 4 1/3 in

ST. MORITZ

PARIS

KÖLN

# GALERIE KARSTEN GREVE



**John Chamberlain**

*Opera Chocolates*

1994

Painted and chromium plated steel

122.9 x 134.6 x 105.4 cm / 48 1/2 x 53 x 41 1/2 in

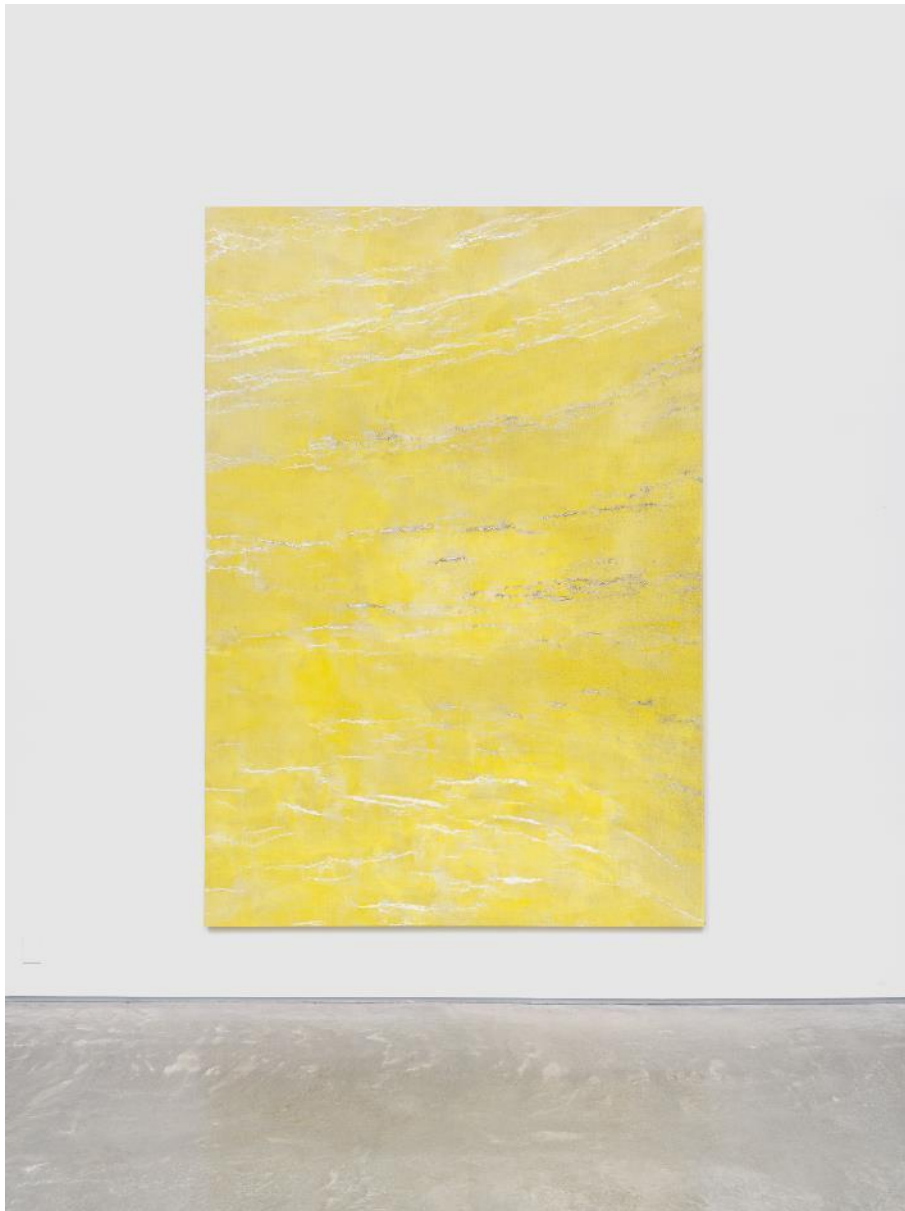
ST. MORITZ

PARIS

KÖLN



# GALERIE KARSTEN GREVE



**Kathleen Jacobs**

*GRACE*

2012 - 2017

Oil on linen

289.6 x 200.7 x 4 cm / 114 x 79 x 1 1/2 in

ST. MORITZ

PARIS

KÖLN

# GALERIE KARSTEN GREVE



**Louise Bourgeois**  
*Portrait of Jean-Louis*  
1947 - 1949 (cast in 1991)  
Bronze, painted, Ed. 3/6  
86.5 x 10.5 x 5 cm / 34 x 4 1/4 x 2 in

# GALERIE KARSTEN GREVE



**Lucio Fontana**

*Arlecchino*

1948

Ceramics, polychromic glazed

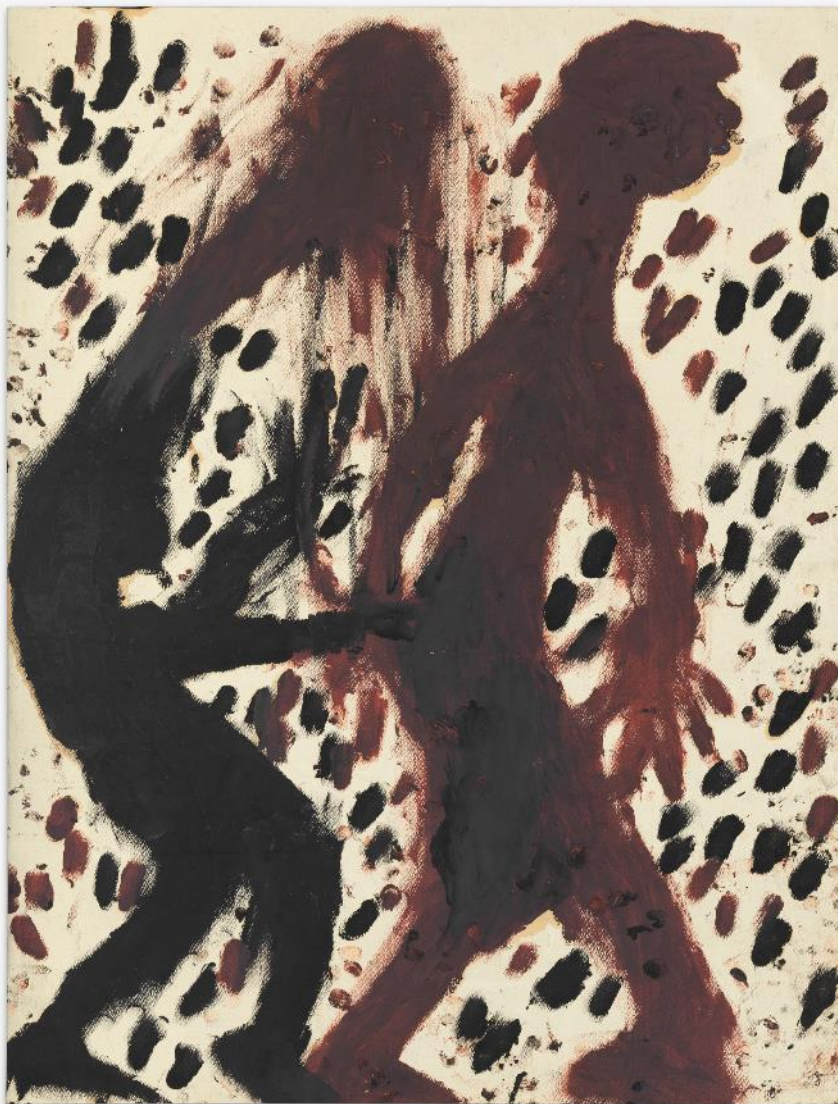
55.5 x 35 x 25 cm / 21 3/4 x 13 3/4 x 9 3/4 in

ST. MORITZ

PARIS

KÖLN

# GALERIE KARSTEN GREVE



**Louis Soutter**

*Allons à l'aventure*

1937 - 1942

Mixed media on paper (finger painting)

58 x 44 cm / 22 3/4 x 17 1/3 in

ST. MORITZ

PARIS

KÖLN

# GALERIE KARSTEN GREVE



**Pierre Soulages**

*Peinture, 213 x 181 cm, 4 juin 2008*

2008

Acrylic on canvas (triptych)

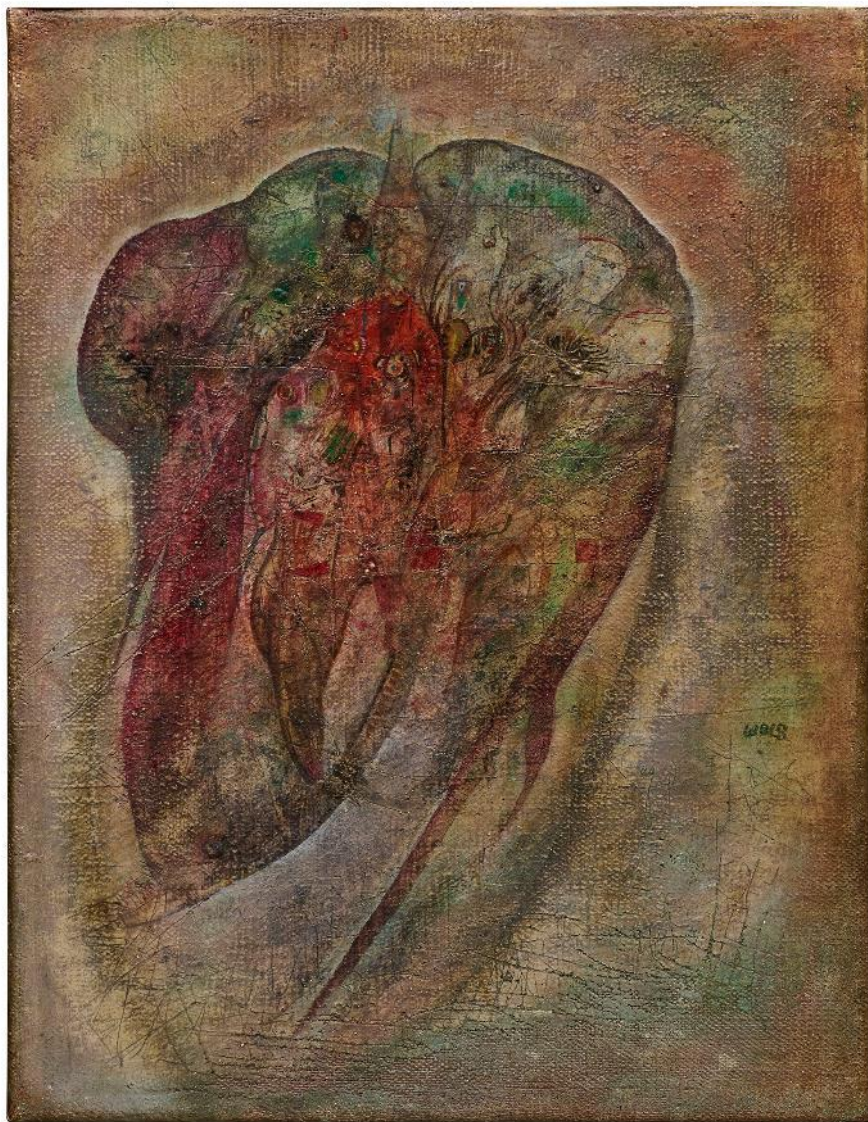
213 x 181 cm / 83 3/4 x 71 1/4 in

ST. MORITZ

PARIS

KÖLN

# GALERIE KARSTEN GREVE



**Wols**

*Untitled*

ca. 1946

Oil on canvas

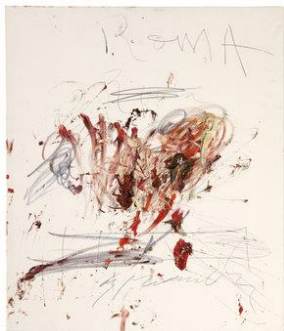
35 x 27 cm / 13 3/4 x 10 2/3 in

ST. MORITZ

PARIS

KÖLN

# GALERIE KARSTEN GREVE



**Cy Twombly**

*Untitled (Roma)*

1962

Oil, pencil and wax crayon on canvas

70.2 x 60 cm / 27 2/3 x 23 2/3 in

Cat. Rais. Bastian 1993, Vol. II, #110

CT/M 11

©Cy Twombly Foundation

Photo: Serge Hasenböhler

Courtesy of Galerie Karsten Greve Köln Paris St. Moritz



**Gideon Rubin**

*Untitled*

2019

Oil on linen

100 x 85 cm / 39 1/3 x 33 1/2 in

GR/M 332

©Gideon Rubin

Photo: Gideon Rubin Studio

Courtesy of Galerie Karsten Greve Köln Paris St. Moritz



**Georgia Russell**

*Forever Ever*

2024

Acrylic and gouache on organza

220 x 190 x 11 cm / 86 2/3 x 74 3/4 x 4 1/3 in

GRu/M 202

© Georgia Russell

Photo: Gilles Mazzufferi

Courtesy of Galerie Karsten Greve Köln Paris St. Moritz



**John Chamberlain**

*Opera Chocolates*

1994

Painted and chromium plated steel

122.9 x 134.6 x 105.4 cm / 48 1/2 x 53 x 41 1/2 in

© John Chamberlain Estate

Courtesy of Galerie Karsten Greve Köln Paris St. Moritz

# GALERIE KARSTEN GREVE



**Kathleen Jacobs**

*GRACE*

2012 - 2017

Oil on linen

289.6 x 200.7 x 4 cm / 114 x 79 x 1 1/2 in

KJ/M 92

© **Kathleen Jacobs**

**Photo: Lisa Vollmer**

**Courtesy of Galerie Karsten Greve Köln Paris St. Moritz**



**Louise Bourgeois**

*Portrait of Jean-Louis*

1947 - 1949 (cast in 1991)

Bronze, painted Ed. 3/6

86.5 x 10.5 x 5 cm / 34 x 4 1/4 x 2 in

BOUR-1584

LB/S 101

© **The Easton Foundation, New York**

**Photo: Nicolas Brasseur**

**Courtesy Galerie Karsten Greve Köln Paris St. Moritz**



**Lucio Fontana**

*Arlecchino*

1948

Ceramics, polychromic glazed

55.5 x 35 x 25 cm / 21 3/4 x 13 3/4 x 9 3/4 in

AF # 4156 / 6

Cat. Rais. Crispolti 1986, Vol. I, S./p. 90, #48 SC 8 /

Crispolti 2006, Vol. I, S./p. 211, #48 SC 8 / Cat. Rais.

Barbero 2022, Vol. I, 48 SC 8, p. 367

LF/S 12

© **Fondazione Lucio Fontana, Milan**

**Photo: Saša Fuis, Cologne**

**Courtesy of Galerie Karsten Greve Köln Paris St. Moritz**



# GALERIE KARSTEN GREVE



**Louis Soutter**

*Allons à l'aventure*

1937 - 1942

Mixed media on paper (finger painting)

58 x 44 cm / 22 3/4 x 17 1/3 in

Cat. Rais. Thévoz 1976 #2724, p. 342

LS/P 47

**Photo: Serge Hasenböhler**

**Courtesy of Galerie Karsten Greve Köln Paris St. Moritz**



**Pierre Soulages**

*Peinture, 213 x 181 cm, 4 juin 2008*

2008

Acrylic on canvas (triptych)

213 x 181 cm / 83 3/4 x 71 1/4 in

Cat. Rais. Encrevé, L'œuvre complet, peintures, IV. 1997 - 2013, 2015, #1400

PSou/M 23

**Photo: Vincent Cunillère**

**©Courtesy of Galerie Karsten Greve Köln Paris St. Moritz**



**Wols**

*Untitled*

ca. 1946

Oil on canvas

35 x 27 cm / 13 3/4 x 10 2/3 in

W/M 7

**©Courtesy of Galerie Karsten Greve Köln Paris St. Moritz**

# GALERIE KARSTEN GREVE

For any enquiries, please contact:  
[info@galerie-karsten-greve.de](mailto:info@galerie-karsten-greve.de)

## **GALERIE KARSTEN GREVE PARIS**

5, rue Debelleye  
F-75003 Paris  
Tel. +33 (0)1 42 77 19 37  
Fax +33 (0)1 42 77 05 58  
[info@galerie-karsten-greve.fr](mailto:info@galerie-karsten-greve.fr)

Hours :  
Tue - Sat : 10h - 19h

## **GALERIE KARSTEN GREVE KÖLN**

Drususgasse 1-5  
D-50667 Cologne  
Tel. +49 (0)221 257 10 12  
Fax +49 (0)221 257 10 13  
[info@galerie-karsten-greve.de](mailto:info@galerie-karsten-greve.de)

Hours :  
Tue - Fri : 10h - 18h30  
Sat : 10h - 18h

## **GALERIE KARSTEN GREVE AG ST. MORITZ**

Via Maistra 4  
CH-7500 St. Moritz  
Tel. +41 (0)81 834 90 34  
Fax +41 (0)81 834 90 35  
[info@galerie-karsten-greve.ch](mailto:info@galerie-karsten-greve.ch)

Hours :  
Tue – Fri : 10h -13h / 14h - 18h30  
Sat : 10h - 13h / 14h - 18h

Galerie Karsten Greve online:

[www.galerie-karsten-greve.com](http://www.galerie-karsten-greve.com)  
[www.facebook.com/galeriekarstengreve](https://www.facebook.com/galeriekarstengreve)  
[www.instagram.com/galeriekarstengreve](https://www.instagram.com/galeriekarstengreve)